

# Fleet Manager Mobile User Guide

## Contents

Login.....	1
Home Tab (Map Page).....	1
Menu .....	2
Filter .....	3
Vehicles Tab .....	3
Filter .....	4
Search.....	5
Vehicle Detail Page .....	5
Landmarks Tab.....	5
Search.....	6
Alerts Tab .....	6
Account Tab.....	7

## Download

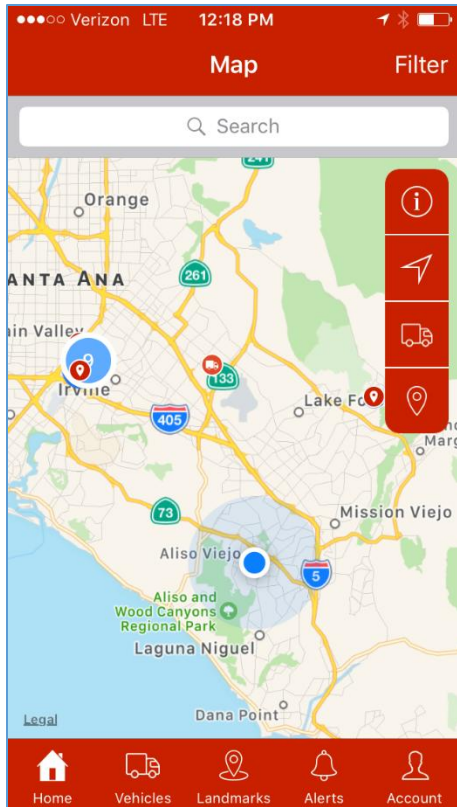
The Fleet Manager Mobile native mobile app is available for download on iOS and android devices. To download please visit the Google Play store or the iOS/ Android app store and search for Fleet Manager Mobile.

## Login

Any user that has credentials to log into the desktop application can use the same credentials to log into the Fleet Manager Mobile native mobile app.

## Home Tab (Map Page)

1. Map overview with vehicle and landmark locations
2. Detail view of vehicles with address information and status
3. See which vehicles are closest to your current location
4. Filter vehicles on the map page by moving, idle, inside or outside landmarks



## Menu

From the right hand side menu on the map page it is easy to adjust the view of the map:



### Info Icon:

Upon tap on this icon a secondary menu will pop up at the bottom of the page. From here the view of the map can be switched from the regular map view to satellite view. The page may also be refreshed via a “refresh”: button within this menu.

### Current Location Icon:

Upon tap on this icon the map page will zoom in to show your current location. Vehicles and landmarks close to your proximity will be visible on the map page.

### Vehicle Icon:

Upon tap on this icon the map page will adjust its zoom level to show all vehicles on the map page.

**Landmark Icon:**

Upon tap on this icon the map page will adjust its zoom level to show all landmarks on the map page.

**Filter**

On tap on the “Filter” on the top right hand side of the screen while on the map page, the following filter options become available:

**Moving:**

On tap this adjust the maps zoom level to show all vehicles currently moving on the map page.

**Stopped:**

On tap this adjust the maps zoom level to show all vehicles currently stopped on the map page.

**Idle:**

On tap this adjust the maps zoom level to show all vehicles currently idle on the map page.

**In LM (Landmark):**

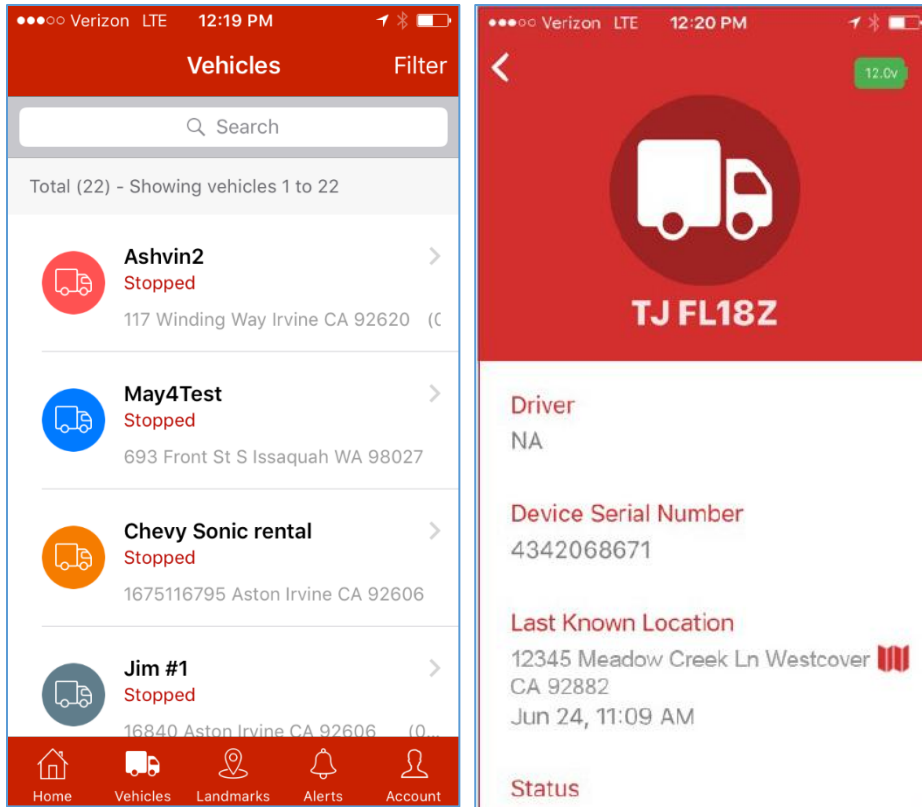
On tap this adjust the maps zoom level to show all vehicles currently inside of a landmark.

**Outside LM (Landmark):**

On tap this adjust the maps zoom level to show all vehicles currently outside of a landmark.

**Vehicles Tab**

1. Vehicle and list view with search capability and address and vehicle status details
2. Vehicle detail page view with detailed info on vehicle and driver
3. Tap on the map icon to be redirected to the map page showing the vehicles' location



## Filter

On tap on the “Filter” on the top right hand side of the screen while on the vehicle list view page, the following filter options become available:

### **Moving:**

On tap this adjust the maps zoom level to show all vehicles currently moving on the map page.

### **Stopped:**

On tap this adjust the maps zoom level to show all vehicles currently stopped on the map page.

### **Idle:**

On tap this adjust the maps zoom level to show all vehicles currently idle on the map page.

### **In LM (Landmark):**

On tap this adjust the maps zoom level to show all vehicles currently inside of a landmark.

### **Outside LM (Landmark):**

On tap this adjust the maps zoom level to show all vehicles currently outside of a landmark.

## Search

Type at least 3 characters into the search bar at the top of the page to search for a specific vehicle. From the search results select a vehicle by tapping on it and move to the vehicle detail page.

## Vehicle Detail Page

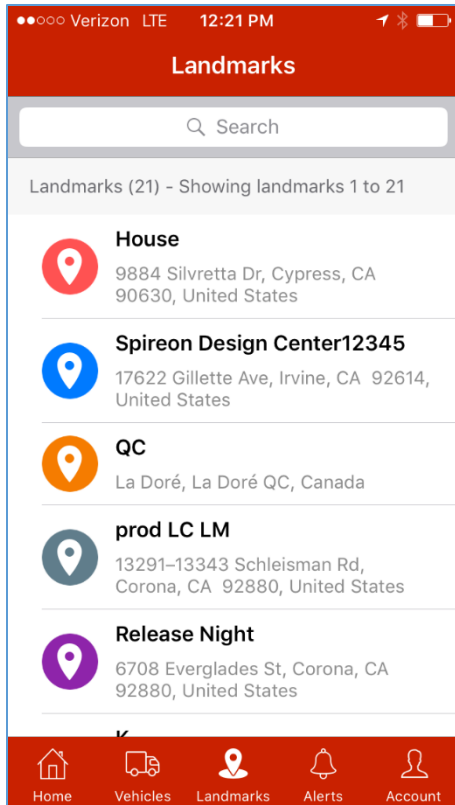
The vehicle detail page provides additional information on the particular vehicle selected such as:

- Driver (if applicable)
- Serial number
- Last known location
- Status
- Odometer
- Engine Hours
- Temperature (if applicable)
- Year/ Make/ Model
- VIN
- Asset Type
- Group(s)
- Tag(s)

It also indicates the battery status of the vehicle in the top right hand corner of the detail screen. Tap on the map icon within the “Last known location” section to be redirected to the map page showing the vehicles’ location. Tap the back arrow on the top left hand side of the page to return back to the vehicle list view page.

## Landmarks Tab

1. Landmark list view with search capability and address details
2. Tap on an individual landmark to be redirected to the map page showing the individual landmarks location on the map.

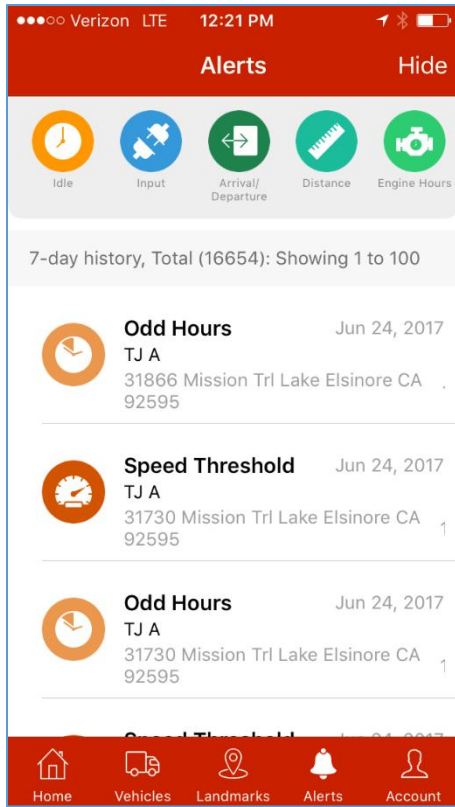


## Search

Type at least 3 characters into the search bar at the top of the page to search for a specific landmark. From the search results select a landmark by tapping on it and move to map page with the landmark location showing.

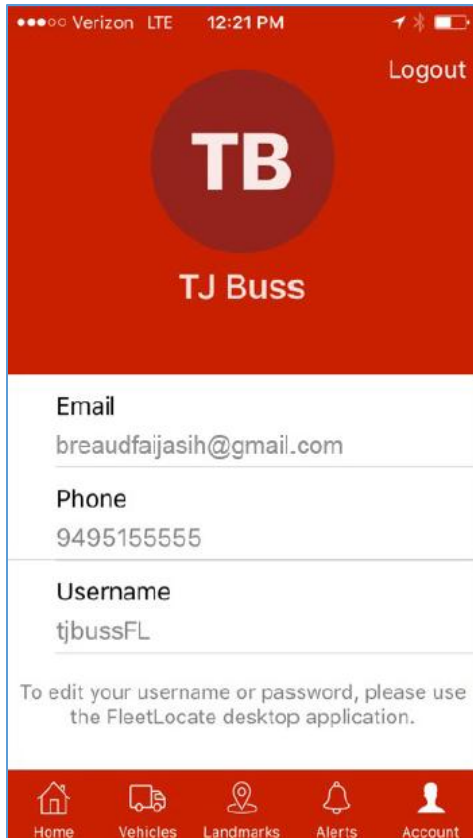
## Alerts Tab

1. View alerts for all vehicles for the last 7 days
2. Filter by alert type



## Account Tab

1. Account info page with log out option



The Account tab displays the logged in user's email, phone number (if applicable) and user name. You have the option to log out of the app by clicking on "Logout" at the top right hand side of the screen. User information may not be edited within the mobile app. Please log into the desktop application to do so.



